

# FINELY ROLLED EGG MADOKA



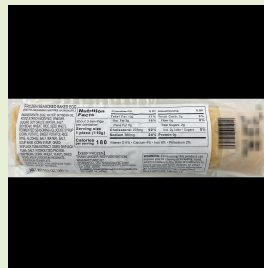
Frozen

540 days

made in JAPAN

Export performance Country

This unique egg omelette is crafted using a special method, creating multiple layers for the perfect texture. It is packed with rich dashi flavor and juiciness.



Country of Origin	JAPAN
Package	300g/pkg
Size	200 x 55 x 30mm
Carton	40pkgs/CTN
Main Ingredients	Egg, Sugar, Starch, etc.
How to Cook	Please thaw before use.

## Recommended Menu

Warm-up and eat with radish is the most popular in Japan.



Dashimaki Egg



Dashi Egg Sand



Oden



Dashimaki Roll Sushi



For bento box



Dashi Egg Tempura